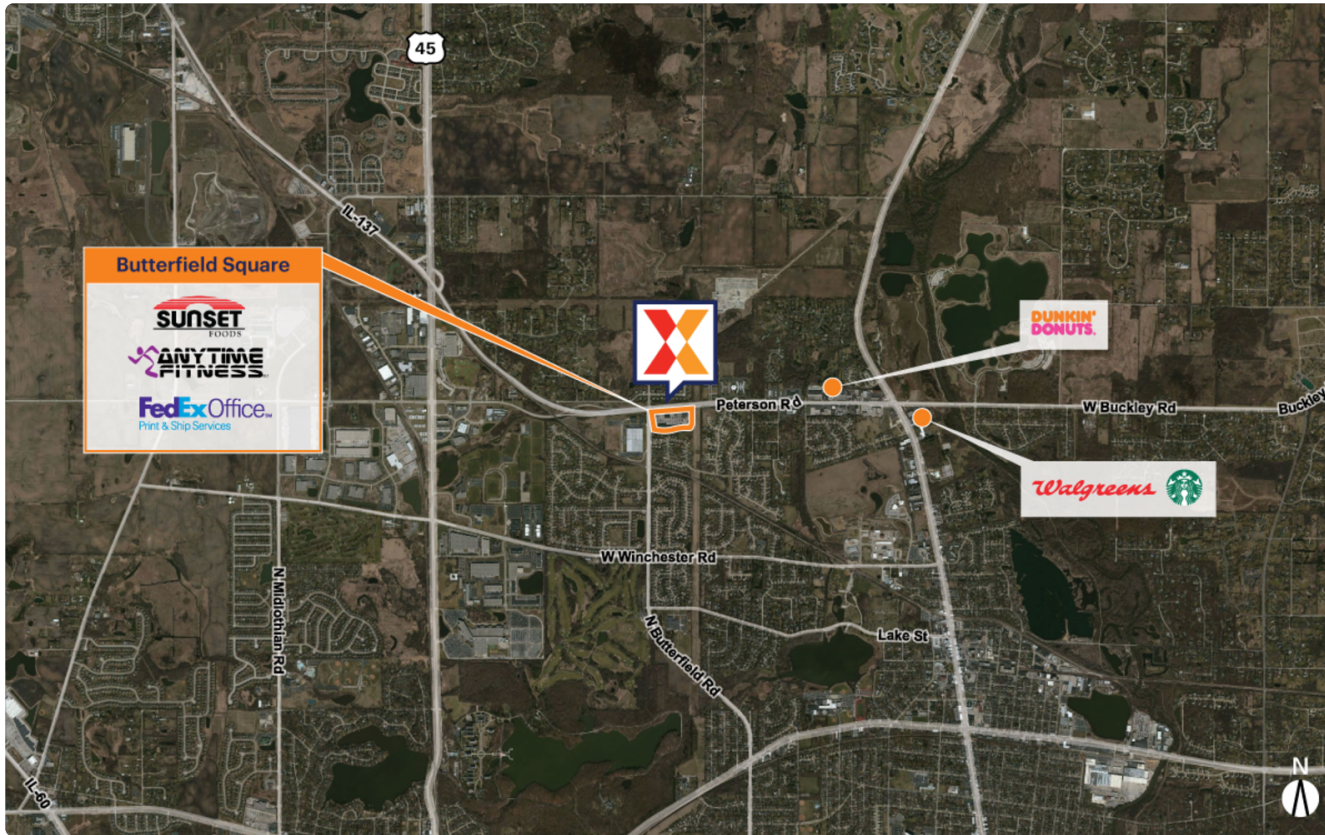


Butterfield Square

1451 Peterson Road | Libertyville, IL 60048

📍 Lake County 📍 Chicago-Naperville-Elgin, IL-IN 📏 106,683 Sq Ft

42.3047, -87.9814



Demographics	1 Mile	3 Miles	5 Miles
Population	4,037	42,027	128,618
Daytime Pop.	5,284	48,160	163,431
Households	1,369	15,362	48,712
Income	\$274,290	\$189,895	\$169,022

Source: Synergos Technologies, Inc. 2024

Market-dominant neighborhood center anchored by Sunset Foods, a local customer-favorite grocer

Surrounded by an affluent and highly educated population with average household incomes of \$190K+ and 57% college-educated within a 3-mile radius

Strong daytime population of 48K+ within 3 miles

Located on the major east/west arterial, with high visibility from 27K+ vehicles daily on Peterson Rd/IL 137 (Kalibrate 2025)

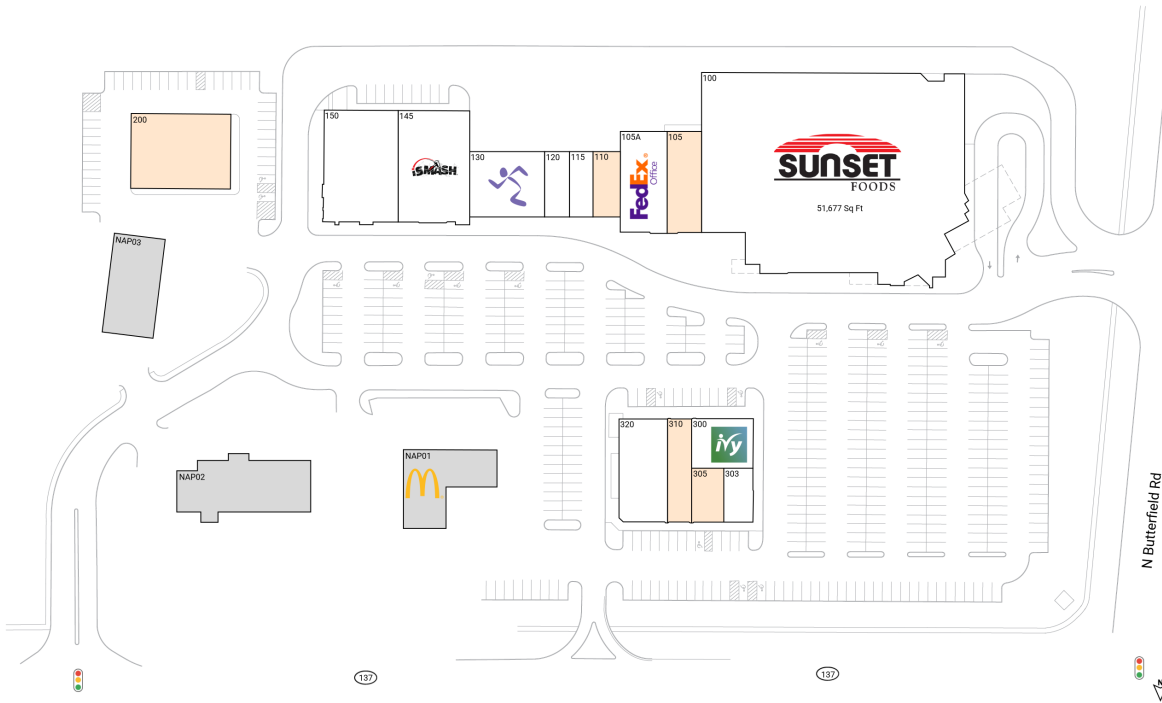


Butterfield Square

1451 Peterson Road | Libertyville, IL 60048

Lake County Chicago-Naperville-Elgin, IL-IN 106,683 Sq Ft

42.3047, -87.9814



Available Spaces

105	3,500 Sq Ft	360°	305	1,252 Sq Ft	360°
110	1,800 Sq Ft	360°	310	2,500 Sq Ft	360°
200	7,500 Sq Ft	360°			

Current Tenants

Space size listed in square feet

100	Sunset Foods	51,677
105A	Fedex Office	4,500
115	Fannie May	1,527
120	Meat n' Melt	1,625
130	Anytime Fitness	4,898
145	iSmash	8,045
150	Jimmy's Charhouse	8,240
300	Ivy Rehab Physical Therapy	3,034
303	The Eye Spot	1,585
320	Mario Tricoci Salon	5,000
NAP01	McDonald's	0
NAP02	BankFinancial	0
NAP03	A.W. Zengeler Cleaners	0

This site plan is for illustrative and information purposes only, showing the general layout of the shopping center; and is not a legal survey. Brixmor makes no representation or warranty that the shopping center is exactly as depicted as site conditions and tenant mix are subject to change over time.
4148

